

V27, K4.2

Residential Horizontal Sidewall, Recessed Horizontal Sidewall

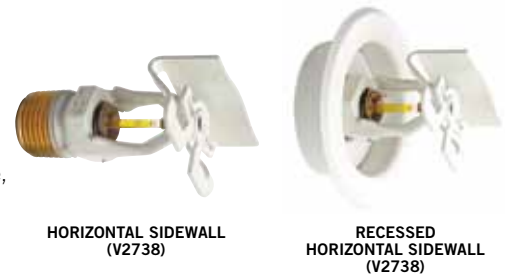
V2738 QUICK RESPONSE

These Model V2738 residential sprinklers are designed to meet the requirements of the 2002 or later NFPA 13, 13D and 13R for residential use. The Model V2738 is UL Listed for use under smooth flat horizontal ceilings. The design incorporates state-of-the-art, heat responsive, frangible glass bulb design (quick response) for prompt, precise operation.

The die cast frame is more streamlined and attractive than traditional sand cast frames. It is cast with a hex-shaped wrench boss to allow easy tightening from many angles, reducing assembly effort. This sprinkler is available in various finishes to meet many design requirements.



SEE VICTAULIC PUBLICATION 10.01 FOR DETAILS



SPRINKLER OPERATION:

The operating mechanism is a frangible glass bulb which contains a heat responsive liquid. During a fire, the ambient temperature rises causing the liquid in the bulb to expand. When the ambient temperature reaches the rated temperature of the sprinkler, the bulb shatters. As a result, the waterway is cleared of all sealing parts and water is discharged towards the deflector. The deflector is designed to distribute the water in a pattern that is most effective in controlling the fire.

COVERAGE:

Residential spray coverage up to 320sq. ft./29.9sq. m room sizes per NFPA.

TECHNICAL SPECIFICATIONS:

Models: V2738
Style: Residential Horizontal Sidewall and Recessed Horizontal Sidewall
Nominal Orifice Size: 7/16"/12 mm
K-Factor: 4.2 Imp./6.1 S.I.[^]
Nominal Thread Size: 1/2" NPT/15 mm
Max. Working Pressure: 175 psi/1200 kPa
Factory Hydrostatic Test:
 100% @ 500 psi/3450 kPa
Min. Operating Pressure: 7 psi/48 kPa
Temperature Rating: See chart on page 2

Material Specifications
Deflector: Bronze per UNS C51000
Bulb: Glass with glycerin solution.
Bulb Nominal Diameter:
 • Quick Response: 3.0 mm
Load Screw: Bronze per UNS C65100
Pip Cap: Bronze per UNS C65100
Spring: Beryllium nickel
Seal: Teflon* tape
Frame: Die cast brass 65-30
Lodgement Spring:
 Stainless steel per UNS S30200

Accessories

Installation Wrench:

- Open End: V27
- Recessed: V27-2

Sprinkler Finishes:

- Plain brass
- Chrome plated
- White painted**
- Custom painted**

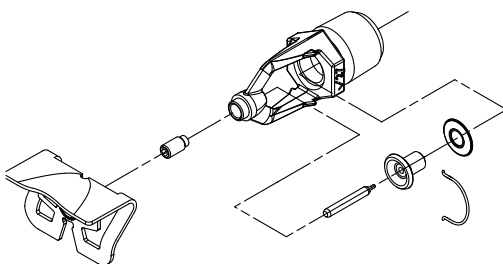
For escutcheons, cabinets and other accessories refer to separate sheet.

NOTE: Weather resistant recessed escutcheons available upon request.

[^] For K-Factor when pressure is measured in Bar, multiply S.I. units by 10.0.

* Teflon is a registered trademark of Dupont Co.

** UL Listed for corrosion resistance.



JOB/OWNER

System No. _____
 Location _____

CONTRACTOR

Submitted By _____
 Date _____

ENGINEER

Spec Sect _____ Para _____
 Approved _____
 Date _____

V27, K4.2

Residential Horizontal Sidewall, Recessed Horizontal Sidewall

V2738 QUICK RESPONSE

APPROVALS/LISTINGS

Model	Orifice Size	Nominal K-Factor	Response	Deflector Type	Approved Temperature Ratings °F/°C ‡		
					cULus	NYC/MEA‡	CSFM
V2738	7/16 11	4.2 6.1	Quick	Horizontal Sidewall	155, 175 68, 79	155, 175 68, 79	155, 175 68, 79
V2738	7/16 11	4.2 6.1	Quick	Recessed Horizontal Sidewall Up to 3/4" Adjustment	155, 175 68, 79	155, 175 68, 79	155, 175 68, 79

‡ Listings and approval as of printing.

^ For K-Factor when pressure is measured in Bar, multiply S.I. units by 10.0.

† MEA #62-99-E.

RATINGS

All glass bulbs are rated for temperatures from -67°F/-55°C to those shown in table below.

Sprinkler Temperature Classification	Victaulic Part Identification	Temperature – °F/°C		Glass Bulb Color
		Nominal Temperature Rating	Maximum Ambient Temperature Allowed	
Ordinary	C	155 68	100 38	Red
Intermediate	E	175 79	150 66	Yellow

ORDERING INFORMATION

Please specify the following when ordering:





Sprinkler Model Number	
Style	
Temperature Rating	
K-Factor	
Thread Size	
Quantity	
Sprinkler Finish	
Escutcheon Finish	
Wrench Model Number	

V27, K4.2

Residential Horizontal Sidewall, Recessed Horizontal Sidewall

V2738 QUICK RESPONSE



 WARNING	
  	<ul style="list-style-type: none"> • Always read and understand installation, care, and maintenance instructions, supplied with each box of sprinklers, before proceeding with installation of any sprinklers. • Always wear safety glasses and foot protection. • Depressurize and drain the piping system before attempting to install, remove, or adjust any Victaulic piping products. • Installation rules, especially those governing obstruction, must be strictly followed. • Painting, plating, or any re-coating of sprinklers (other than that supplied by Victaulic) is not allowed. <p>Failure to follow these instructions could result in serious personal injury and/or property damage.</p> <p>The owner is responsible for maintaining the fire protection system and devices in proper operating condition. For minimum maintenance and inspection requirements, refer to the current National Fire Protection Association pamphlet that describes care and maintenance of sprinkler systems. In addition, the authority having jurisdiction may have additional maintenance, testing, and inspection requirements that must be followed.</p> <p>If you need additional copies of this publication, or if you have any questions about the safe installation of this product, contact Victaulic World Headquarters: P.O. Box 31, Easton, Pennsylvania 18044-0031 USA, Telephone: 001-610-559-3300.</p>

AVAILABLE WRENCHES

Sprinkler Type	Open End	Recessed
V2738 – No escutcheon	V27	V27-2
V2738 – With escutcheon	—	V27-2

V27, K4.2

Residential Horizontal Sidewall, Recessed Horizontal Sidewall

V2738 QUICK RESPONSE

DIMENSIONS

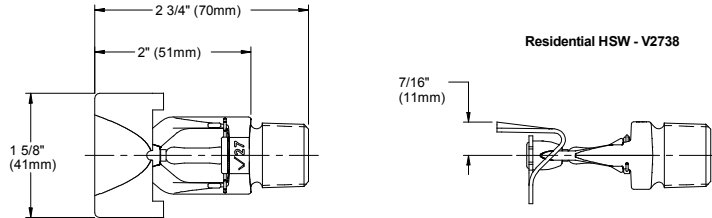
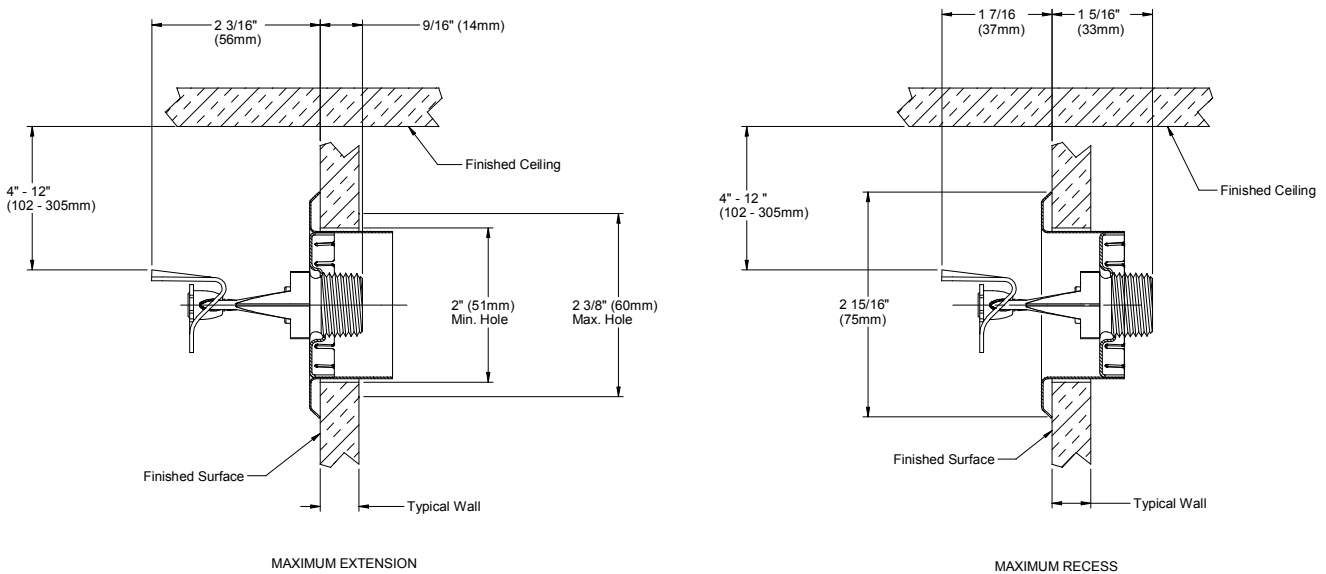


Figure 1 – 3/4" Adjustment Recessed – V2738 (drawing not to scale)



V27, K4.2

Residential Horizontal Sidewall, Recessed Horizontal Sidewall

V2738 QUICK RESPONSE

ROOM SIZE

Victaulic V2738, 4.2 K-Factor Horizontal Sidewall Sprinkler
For Ceiling types refer to NFPA 13, 13R or 13D 2013 Editions

Max. Coverage Area ^(a) Width X Length ^(c)	Max. Spacing	Ordinary Temp Rating 155°F/68°C		Intermediate Temp Rating 175°F/79°C		Top of Deflector to Ceiling	Installation Type	Minimum Spacing
		Flow ^(b) GPM L/min	Pressure ^(b) PSI bar	Flow ^(b) GPM L/min	Pressure ^(b) PSI bar			
12 X 12 3.7 X 3.7	12 3.7	14 53.0	11.1 0.76	14 53.0	11.1 0.76	4 to 6 inches	¾" recessed using Escutcheon or non-recessed per NFPA 13, 13R or 13D	8.0 2.4
14 X 14 4.3 X 4.3	14 4.3	14 53.0	11.1 0.76	14 53.0	11.1 0.76			
16 X 16 4.9 X 4.9	16 4.9	17 64.4	16.4 1.13	17 64.4	16.4 1.13			
16 X 18 4.9 X 5.5	16 4.9	19 72.0	20.5 1.4	19 72.0	20.5 1.4			
16 X 20 4.9 X 6.1	16 4.9	23 87.1	30.0 2.1	23 87.1	30.0 2.1			
12 X 12 3.7 X 3.7	12 3.7	15 56.8	12.8 0.88	15 56.8	12.8 0.88			
14 X 14 4.3 X 4.3	14 4.3	17 64.4	16.4 1.13	17 64.4	16.4 1.13			
16 X 16 4.9 X 4.9	16 4.9	19 72.0	20.5 1.4	19 72.0	20.5 1.4			
16 X 18 4.9 X 5.5	16 4.9	24 90.8	32.6 2.25	24 90.8	32.6 2.25			
16 X 20 4.9 X 6.1	16 4.9	28 106.0	44.4 3.06	28 106.0	44.4 3.06			

(a) For coverage area dimensions less than or between those indicated, use the minimum required flow for the next highest coverage area for which hydraulic design criteria are stated.

(b) For NFPA 13 residential applications, the greater of 0.1gpm/ft² over the design area of the flow in accordance with the criteria in the table must be used.

(c) The Width X Length dimension refers to the Width (backwall where the sprinkler is located) times the Length (horizontal throw of sprinkler)

V27, K4.2

Residential Horizontal Sidewall, Recessed Horizontal Sidewall

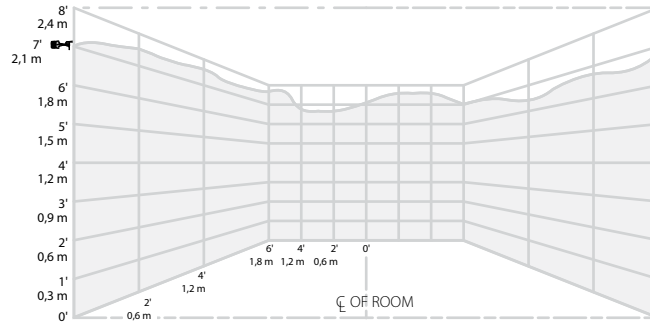
V2738 QUICK RESPONSE

NOMINAL WETTING PATTERNS

Model V2738

K4.2 Residential Horizontal Sidewall

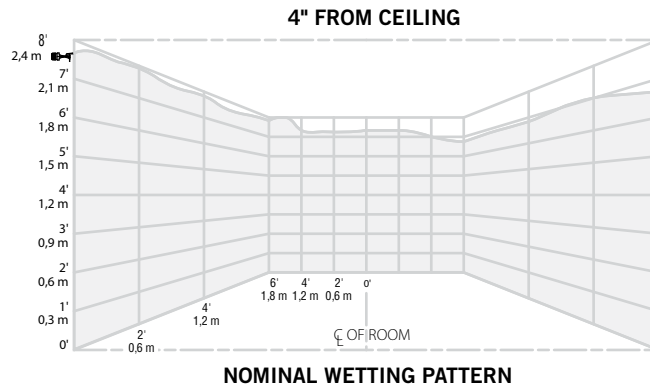
15 GPM/56.8 LPM – 12' x 12'/3.7 x 3.7 m coverage area – 12"/304.8 mm from ceiling



Model V2738

K4.2 Residential Horizontal Sidewall

14 GPM/53.0 LPM – 12' x 12'/3.7 x 3.7 m coverage area – 4"/101.6 mm from ceiling



See notes on page 11.

V27, K4.2

Residential Horizontal Sidewall, Recessed Horizontal Sidewall
V2738 QUICK RESPONSE

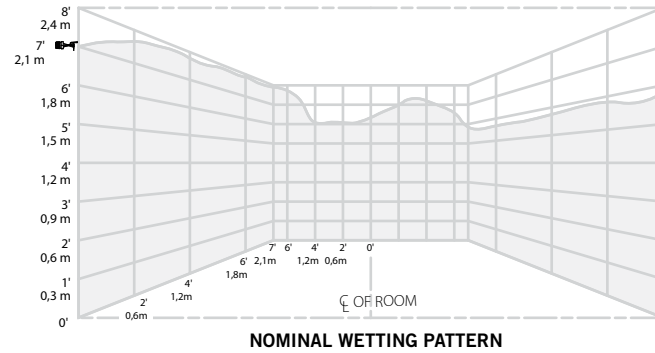
NOMINAL WETTING PATTERNS

Model V2738

K4.2 Residential Horizontal Sidewall

17 GPM/64.3LPM – 14' x 14'/4.3 x 4.3 m coverage area – 12"/304.8mm from ceiling

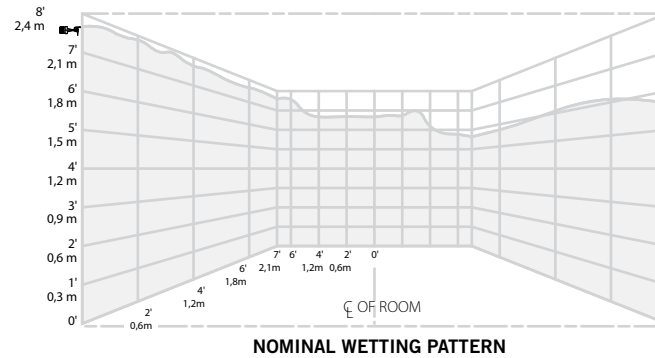
12" FROM CEILING



Model V2738

K4.2 Residential Horizontal Sidewall

14 GPM/53.0LPM – 14' x 14'/4.3 x 4.3 m coverage area – 4"/101.6mm from ceiling



See notes on page 11.

V27, K4.2

Residential Horizontal Sidewall, Recessed Horizontal Sidewall

V2738 QUICK RESPONSE

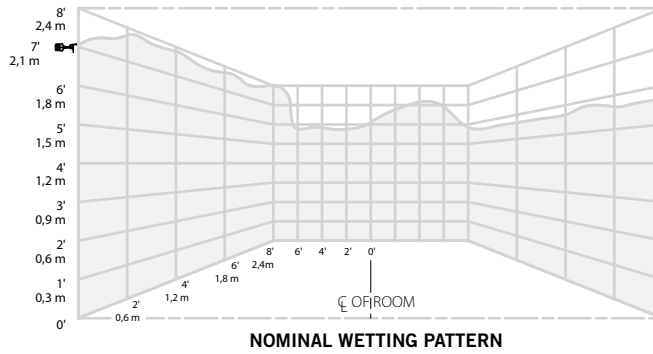
NOMINAL WETTING PATTERNS

Model V2738

K4.2 Residential Horizontal Sidewall

19GPM/71.9LPM – 16' x 16'/4.9 x 4.9m coverage area – 12"/304.8mm from ceiling

12" FROM CEILING

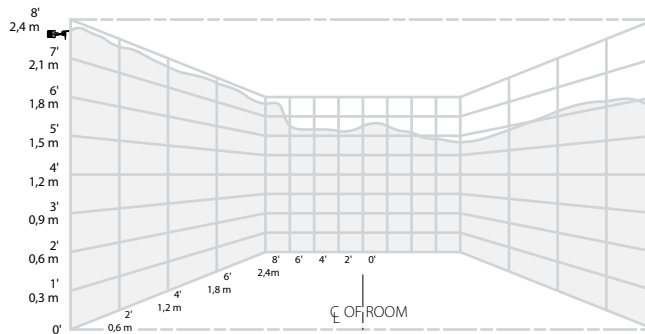


NOMINAL WETTING PATTERN

Model V2738

K4.2 Residential Horizontal Sidewall

17GPM/64.3LPM – 16' x 16'/4.9 x 4.9m coverage area – 4"/101.6 mm from ceiling



NOMINAL WETTING PATTERN

See notes on page 11.

V27, K4.2

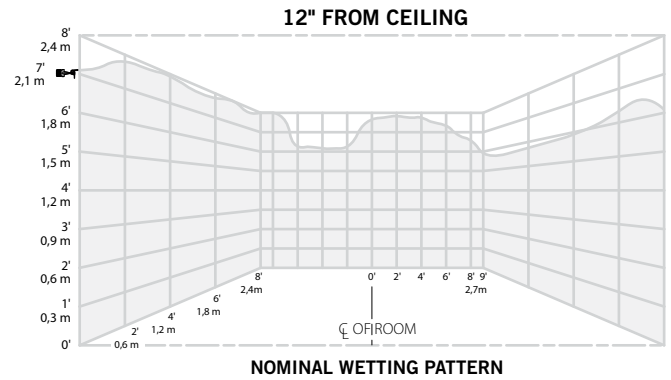
Residential Horizontal Sidewall, Recessed Horizontal Sidewall
V2738 QUICK RESPONSE

NOMINAL WETTING PATTERNS

Model V2738

K4.2 Residential Horizontal Sidewall

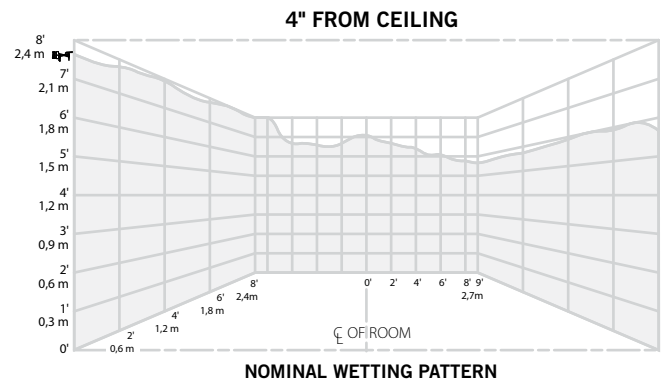
24 GPM/90.8 LPM – 16' x 18'/4.9 x 5.5 m coverage area – 12"/304.8 mm from ceiling



Model V2738

K4.2 Residential Horizontal Sidewall

19 GPM/71.9 LPM – 16' x 18'/4.9 x 5.5 m coverage area – 4"/101.6 mm from ceiling



See notes on page 11.

V27, K4.2

Residential Horizontal Sidewall, Recessed Horizontal Sidewall

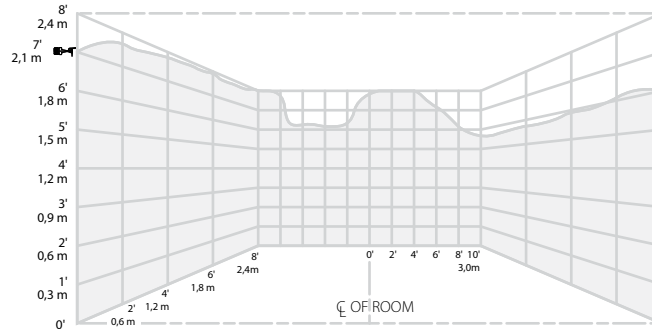
V2738 QUICK RESPONSE

NOMINAL WETTING PATTERNS

Model V2738

K4.2 Residential Horizontal Sidewall

28GPM/106.0LPM – 16' x 20'4.9 x 6.1 m coverage area – 12"/304.8mm from ceiling

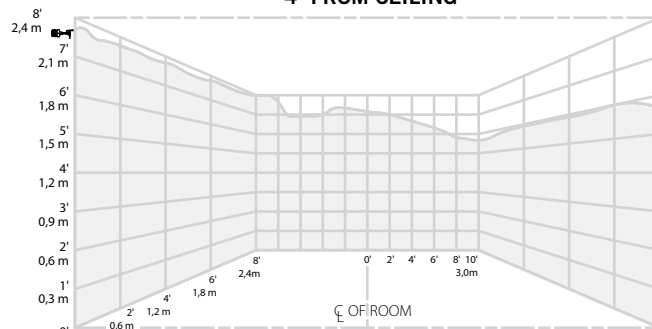


Model V2738

K4.2 Residential Horizontal Sidewall

23GPM/87.0 LPM – 16' x 20'4.9 x 6.1m coverage area – 4"/101.6mm from ceiling

4" FROM CEILING



NOMINAL WETTING PATTERN

NOTES:

- 1 Data shown is approximate and can vary due to differences in installation.
- 2 These graphs illustrate approximate wall-wetting patterns for these specific Victaulic FireLock Automatic Sprinklers. They are provided as information for guidance and should not be used as minimum sprinkler spacing rules for installation. Sprinkler location shall be in accordance with the obstruction rules for residential sprinklers in NFPA 13 (2002 or later revision). Failure to follow these guidelines could adversely affect the performance of the sprinkler and will void all Listings, Approvals and Warranties.
- 3 All patterns are symmetrical to waterway.

V27, K4.2

Residential Horizontal Sidewall, Recessed Horizontal Sidewall

V2738 QUICK RESPONSE

WARRANTY

Refer to the Warranty section of the current Price List or contact Victaulic for details.

NOTE

This product shall be manufactured by Victaulic or to Victaulic specifications. All products to be installed in accordance with current Victaulic installation/assembly instructions. Victaulic reserves the right to change product specifications, designs and standard equipment without notice and without incurring obligations.

For complete contact information, visit www.victaulic.com

40.54 3089 REV D UPDATED 03/2013

VICTAULIC IS A REGISTERED TRADEMARK OF VICTAULIC COMPANY. © 2013 VICTAULIC COMPANY. ALL RIGHTS RESERVED.

40.54

